

CaliforniaColleges.edu and transcript data sharing between K-12 and CCC's

April 13, 2017

California College
Guidance Initiative



**CALIFORNIA
COLLEGES.edu**
DISCOVER. PLAN. LAUNCH.

What are we going to cover?

- (Very) brief history of CaliforniaColleges.edu and CCGI
- 2017 integration with CCCApply
 - Transcript data for placement
 - Outreach support
 - Dual Enrollment opportunity
- Brief preview of new CaliforniaColleges.edu look and feel
- Answer any questions

Our Mission

Systematically **increase career and college preparation** for 6th-12th grade students, and **facilitate smooth transitions** from K-12 to higher education, so that students start post-secondary positioned to succeed.

History

CaliforniaColleges.edu originated through an inter-segmental budget proposal in 1998 with two goals:

- Create a “common front door” to higher education *and*
- An electronic transcript infrastructure

In July 2013, the California College Guidance Initiative took over management of CaliforniaColleges.edu and built out:

- An electronic transcript infrastructure
- An educator-facing portal to enable data-driven college and career preparation
- Staffing required to meaningfully support integration of these tools into the 6th-12th grade educational experiences of *all* students

Why We Exist

792 : 1

Why We Exist

100 : 67 : 26

100 : 32 : 9

Our Two Big Goals

Goal #1

All high school seniors graduate with a **thoughtful and well-informed** post-secondary plan

Goal #2

Capture students' academic transcript data and SSID from K-12 schools, and allow it to follow the student in a manner that **reduces the information gaps that hinder student success.**

Two Use Scenarios

Open Access Users

- Access to planning tools and academic planner using CMP dropdown menu
- General regional training and user support
- Account link to CCCApply and calstate.edu/Apply

Partner Districts

- Data-informed academic planning tools
- CSU/UC eligibility tools to inform increased “a-g” completion rates
- Pre-verified data informs application to CSUs and CCCs
- Data match pilot with California Student Aid Commission
- Intensive, customized consultation and user support

Importance of Electronic Transcript Platform



is key

K-12

Constant view of progress towards “a-g” eligibility that helps increase “a-g” completion rates

Community College

Better first-year academic placement reduces unnecessary remediation

Electronic Transcript Platform

Pre-verified data in accessible format that keeps all records reliably associated with the student using their Statewide Student Identifier (SSID)

CSU System

More efficient and accurate admissions process reduces delays in admission and financial aid

California Student Aid Commission (CSAC)

Assist “data- matching” and communication with other segments for Cal Grant purposes

2017 CaliforniaColleges.edu and CCCApply Integration

CCCApply Integration – Thank you

- First, only possible thanks to support from:
 - CCC Chancellor's Office
 - Foundation for CCC
 - Butte Tech Center
 - CCCApply Steering Committee
 - K-12 districts
 - Colleges

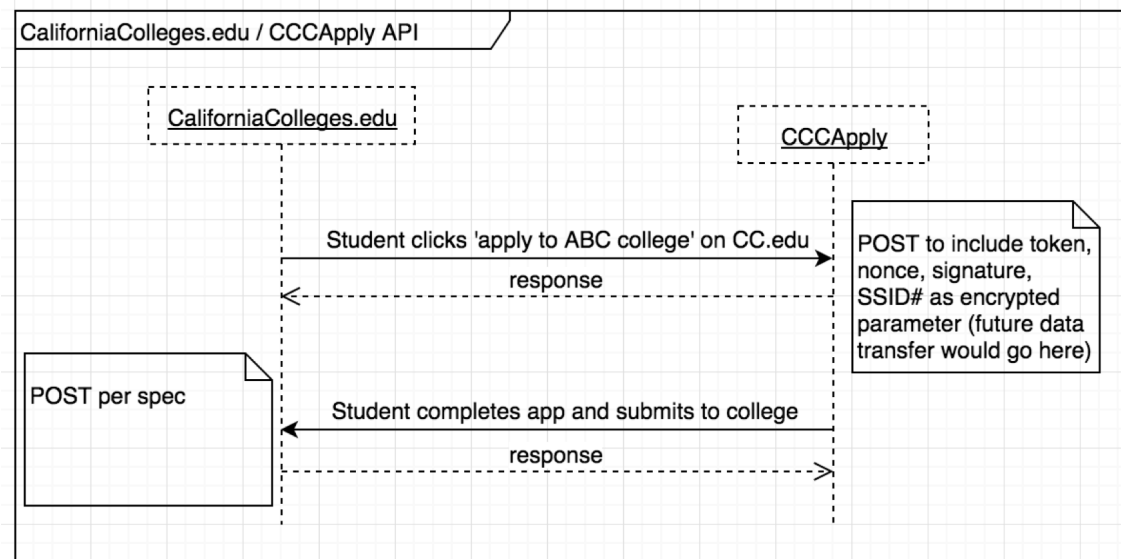
CCCApply Integration – how?

- Students already explore majors and colleges in CaliforniaColleges.edu
- Those who wish to can click an apply link from within their account
- A minimum of data is securely passed asynchronously between the systems, including in partner districts, K-12 SSID #
- Student proceeds through Apply process as normal
- Later, CaliforniaColleges.edu is informed that the student submitted application and CCCID #. This data is available to High School

CCCApply Integration – how? (2)

- The secure data (SSID and CCCID), application response is encrypted and passed through a secure, authenticated API

Sequence diagram of calls/responses. Authentication not shown.



CCCApply Integration – Placement Opportunity

- Transcript data (as defined by the college) for those students who have completed such an application can later be securely transmitted to the college
- Could include:
 - Highest level of Math (including currently enrolled)
 - Highest level of English (including currently enrolled)
 - GPA as defined by HS
 - ? (as allowable under privacy laws and K-12 MOUs)

CCCApply Integration – Placement Challenges

- As you know, it is never quite that simple. There are challenges:
 - College faculty would need to have defined HS placement level/multiple measures articulation
 - CCGI only holds transcript data on behalf of districts in certain areas of the state (but we are growing)
 - Integration/processing of that data at the college SIS level

CCCApply Integration – Dual Enrollment

- Such a link between the K-12 and the College districts may also prove helpful for:
 - Dual Enrollment
 - High School Articulation
 - Outreach Support
 - First Year Experience
 - Student Success Support (priority reg., etc)
 - ?

CCCApply Integration – Dual Enrollment

- Such a link between the K-12 and the College districts may also prove helpful for:
 - Dual Enrollment
 - High School Articulation
 - Outreach Support
 - First Year Experience
 - Student Success Support (priority reg., etc)
 - ?

**Brief look at the updated
CaliforniaColleges.edu**

CaliforniaColleges.edu Student Experience

The platform offers tools students use **for planning, exploration, and reflection** beginning in middle school. High school seniors can launch college applications and FAFSA.

Planning & Exploration Tools

- Academic Planner
- CSU and UC Eligibility Tools
- College Search
- Program and Major Search
- Career Search
- Middle School Career Assessments
- High School Career Assessments
- Scholarship Search
- My Goals
- My Journals
- My Documents
- My Tasks
- Calendar

Applications

- CalState.edu/Apply Integration with verified course data
- CCCApply Integration
- FAFSA Launch
- Links to UC and other applications not supported by CSU, CCC, and Common Application
- Common Application: in discussion
 - Document management (letters of recommendation and transcripts)
 - Coursework matrix (new release in 2017)

CaliforniaColleges.edu – New Look



[My Plan](#) [College](#) [Career](#) [Financial Aid](#)



Welcome

CaliforniaColleges.edu provides students with an **all-inclusive guide for their college & career paths & enables educators to track their progress.**

[Middle School Students](#)

[High School Students](#)

[College Students](#)

[Families](#)

[Educators](#)

Student Outcomes

When students complete the recommended set of activities by grade level starting as early as 6th grade, they build a comprehensive and meaningful postsecondary plan. Educators track progress.

6th <ul style="list-style-type: none"> – Interest Profiler – Career List – College List – Journal 	7th <ul style="list-style-type: none"> – College List – Career List – Goals – Journal 	8th <ul style="list-style-type: none"> – Goals – Learning Styles Assessment – Academic Plan – My Experiences 	
9th <ul style="list-style-type: none"> – Goals – Academic Plan – Interest Profiler – College List – Journal 	10th <ul style="list-style-type: none"> – Multiple Intelligences – Career List – College List – Program/Major List – Journal 	11th <ul style="list-style-type: none"> – Career List – College List – Do What You Are – College List – Scholarship List – EFC calculator* – My Experiences – Resume – Journal 	12th <ul style="list-style-type: none"> – College List – FAFSA – College Applications – My Experiences – Financial Aid Comparison Tool* – Goals – Journal

Customizable at School & District Levels

Activities

CCGI provides a default of key activities at each grade level. Educators can adjust the grade levels at which activities are assigned. Each activity comes with lesson plans and student worksheets.

Tasks & Calendar Events

Add more tasks and calendar events to platform's pre-populated Task List and Calendar to one or more students at a time. Add your own documents to Tasks to encourage student engagement on the platform.

Surveys

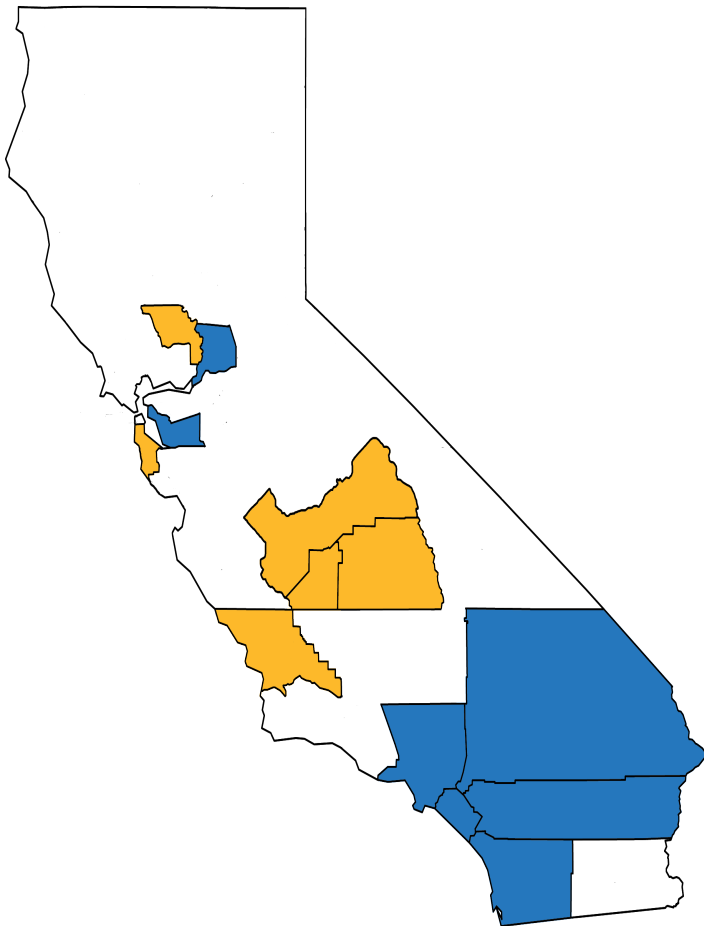
Create, assign, and analyze surveys for groups of students



Educator Experience

The platform offers tools for **educators to guide students'** use of CaliforniaColleges.edu.

- Default activities at each grade level that include lesson plan and student worksheet
- Assign SMART goal prompts
- Assign journal prompts
- Add events to calendar
- Send messages and text/SMS
- Populate task list
- Add local scholarships
- Reset passwords both student and educator
- Set up parent accounts with connection to their students
- Create, assign, and analyze surveys
- Distribute worksheets and other documents
- Create, assign, and analyze surveys for groups of students
- View reports on student activity, academics, and eligibility

Transcript Data Viewable through District Partnerships



-  Counties with current and/or potential new 2017-18 districts
-  Counties with potential new 2017-18 districts

Alameda County

Oakland
Hayward*

Fresno County

Firebaugh*
Kerman*
West Park*

Kings County

Hanford Joint Union*

Los Angeles County

Compton
El Monte
El Rancho
Hacienda La Puente
Long Beach
Norwalk-La Mirada*
Pomona
Rowland

Orange County

Anaheim
Garden Grove
Santa Ana

Riverside County

Corona-Norco
Desert Sands
Hemet
Jurupa*
Moreno Valley
Murrieta Valley
Perris Union
Temecula Valley
Val Verde

Sacramento County

Sacramento City
Elk Grove*

San Bernardino County

Chaffey Joint
Chino Valley
Upland

San Diego County

San Marcos

San Luis Obispo County

Coast*
Lucia Mar*
Paso Robles*
San Luis Coastal*
Shandon*
Templeton*

San Mateo County

Jefferson Union High*

Tulare County

Cutler-Orosi Joint*

Yolo County

Woodland Joint*

* Districts that have applied for 2017-18 but have not signed a contract.

** Districts that have requested and received proposal for partnership from CCGI.

Foundation of Partnership

California College Guidance Initiative

- Local Implementation Team
- Data Analysts

District

- CCGI Lead
- District Data Team or Lead
- School Site Leads
- Counselors
- Principals
- APs
- Teachers

Strategy

- Full immersion across counseling and instructional time

Leadership Teams

- Cross-functional group of district educators, whose **purpose is to guide the CCGI implementation process**
- Speaks to various district perspectives and priorities and collectively **make decisions** about the CCGI partnership
- Develop and execute district's **multi-year plan**
- Track metrics
- Conduct **ongoing evaluation** of district's capacity

Governance, Financing, and Legal Compliance

Data Security

CCGI handles Personally Identifiable Information (PII) carefully and is compliant with the following:

- Family Educational Rights and Privacy Act
- Protection of Pupil Rights Amendment
- Fair Information Practice Principles
- Privacy Technical Assistance Center Requirements and Best Practices
- CA Senate Bill No. 1177
- CA Assembly Bill No. 1584
- Children's Online Privacy Protection Rule
- CaliforniaColleges.edu Privacy Policy for Student Users
- California College Guidance Initiative Memorandum of Understanding

Governance

The Foundation for California Community Colleges is the fiscal and legal home of CCGI.

The Initiative advisory board is comprised of leadership from each educational segment, as well as counselors and educators from across California.

The Student Friendly Services Budget Line item is appropriated to the Riverside County Office of Education (Prop 98).

Contact Information

Interested in talking more about this subject? Email us at:
CollegePartnerships@CaliforniaColleges.org

Benjamin Baird
Director of Data Management
916.952.3785
BBaird@californiacolleges.org